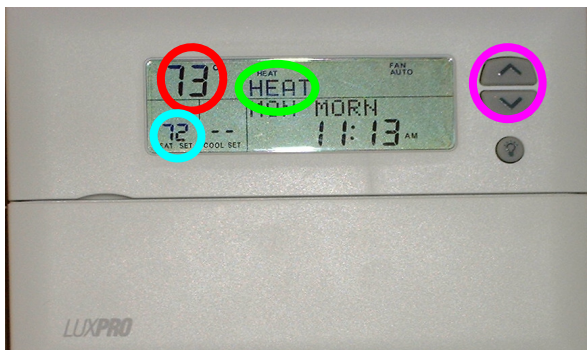
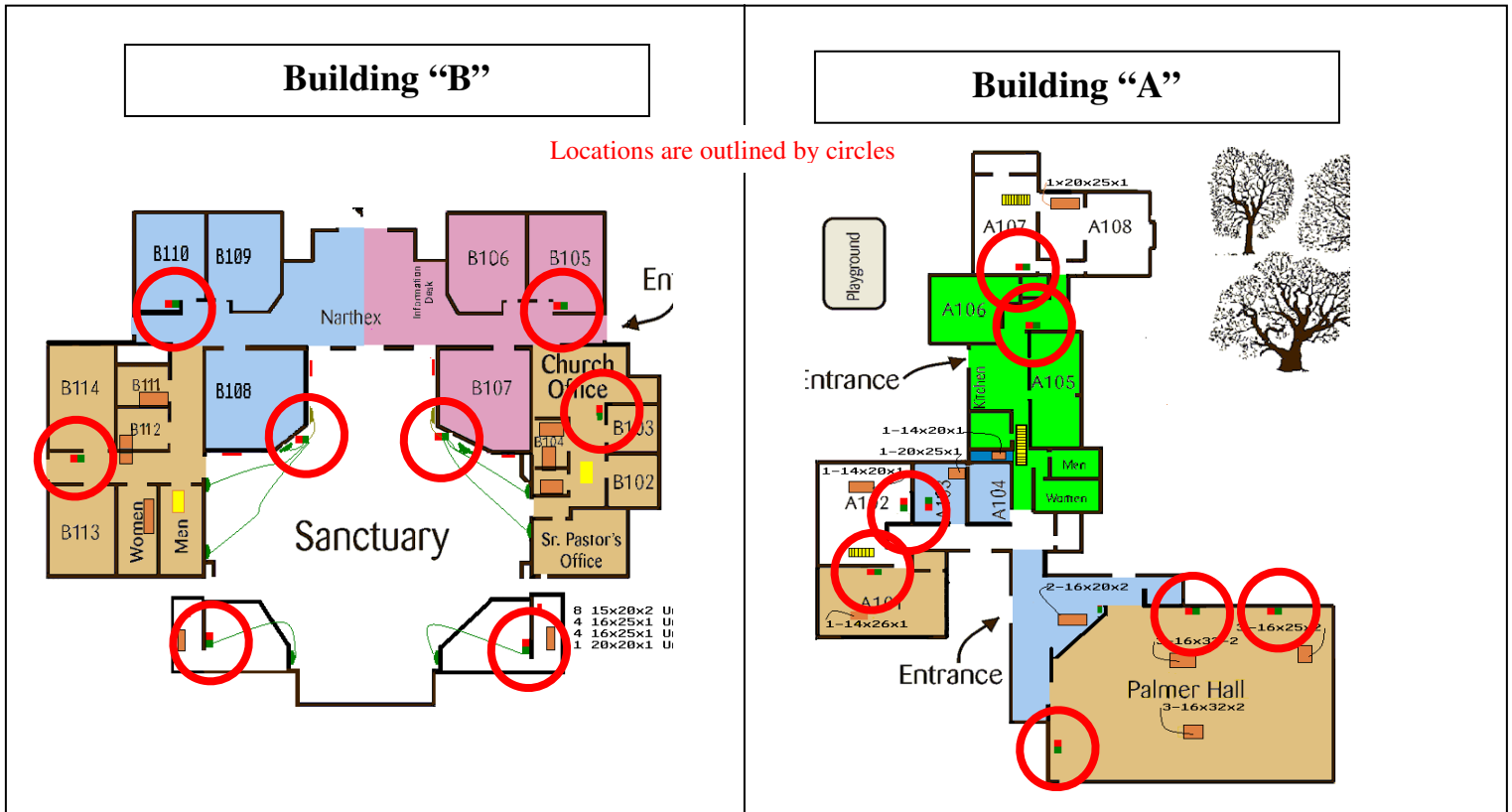


Operation Instructions for LUX Thermostat As of 2/16/2008



- Current temperature reading
- Programmed Temperature
- Mode "HEAT / COLD / AUTO"

- **Depress** to override temperature
- Programmed Temperature is revised to a temporary override state
- **Depress** or **Slide** MODE selector to: "HEAT / COLD / AUTO"
- Never select the **OFF** MODE!

- At the next pre-programmed time, the Programmed Temperature returns to the temperature for Mode the unit is left at